



CONTAIN • PROTECT • SECURE

**LPCB** SECURITY ENCLOSURES  
Anti Vandal & Anti Terrorist





**Innovative housing solutions in GRP and Steel.**

Morgan Marine Ltd has provided innovative housing solutions in both GRP and Steel to the Utility and Construction Sectors since 1965. We offer a full turnkey service from design through to site installation; please visit our website to view our comprehensive range of housings and services offered.



GRP SECURITY ENCLOSURES



STEEL SECURITY ENCLOSURES



SECURITY DOORS



The UK's leading designer, manufacturer and installer of LPCB Security Rated Enclosures, Door Sets and Barsets, for use on sites to protect infrastructure and where security is paramount







### LPCB for GRP

Morgan Marine, the first company to achieve LPCB approval to LPS 1175: Issue 7 for its range of Titan SR2 and SR3 GRP security enclosures. SR4 rated enclosures are now available.

The Titan GRP Range of LPCB Security Rated Enclosures offers complete flexibility as can be offered in any size from 1m<sup>3</sup> up to 30m long x 14m wide and 5m high. Tested and certified to LPS 1175 issue 7 to SR2, SR3 and SR4.

- Security rated steel cowls for aperture/vent protection
- Roofs fixed or removable
- Single or double doors available with multiple lock option



- Available in any colour from BS 5252 or RAL range
- Available in a variety of external finishes: gloss, semigloss, brick effect, stone effect, textured effect, timber effect

### Alternative external finishes to suit the environment



# GRP SECURITY ENCLOSURES



Morgan Marine is proud to continually push the boundaries and develop new products which ensure we stay at the forefront of our industry. The Titan GRP Security Range of Enclosures has revolutionised the industry, offering clients a choice of build materials for the first time.

GRP is a more suitable material for certain applications such as Chemical Dosing and other Water Industry applications as it is non corrosive and by using different resins can offer chemical resistance. Morgan Marine offers the complete service from design and manufacture through to site installation; we are also NICEIC electrical contractor so can offer a full electrical fit out.

## FEATURES

- SR2, SR3 AND SR4\* \*UK Patent Application No. 1408837.1
- FLEXIBILITY IN SIZE
- EXCELLENT THERMAL INSULATION
- AVAILABLE IN A VARIETY OF EXTERNAL FINISHES: SEMIGLOSS, BRICK EFFECT, STONE EFFECT, TEXTURED EFFECT, TIMBER EFFECT
- MULTIPLE LOCK CHOICES
- NICEIC ELECTRICAL INSTALLATIONS
- INTRUDER AND FIRE ALARMS
- LOW MAINTENANCE
- NON CORROSIVE

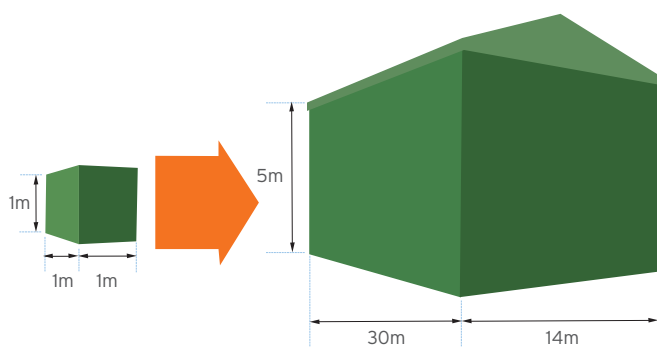
### LPCB Inspection Service

Morgan Marine offers an inspection service to ensure products certified under LPS 1175 continue to meet the required Security Rating. Over time we are aware modifications are made by others which are not necessarily in line with the standard. We can offer site specific inspections, annual and five yearly to suit our clients requirements.



Morgan Titan  
Approved to LPS 1175: Issue 7  
Security Rating 2, 3 and 4  
Cert. No. 1051a/03

For full listings please refer to  
[www.redbooklive.com](http://www.redbooklive.com)







The Hercules and Taurus SAF comprehensive ranges of Security Enclosures will meet all your security requirements, tested and certified to LPS 1175 issue 6 and 7 it includes SR2, SR3 and SR4.

The enclosures are available as Single Skin un-insulated or Double Skin insulated to 0.6w/m<sup>2</sup>/°C as standard and offer complete flexibility in build size (SR2, SR3 & SR4).



**Alternative external finishes to suit the environment**



# STEEL SECURITY ENCLOSURES

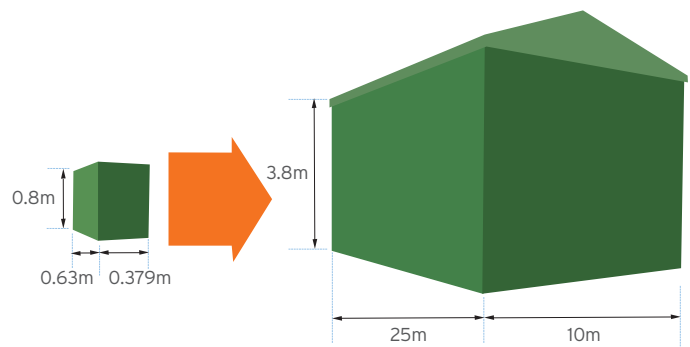


PSF Wales Ltd, part of Morgan GRP and based on the same site as it's sister company Morgan Marine Ltd, took the Security market by storm by offering the first available insulated construction. Our double skin construction gives an exceptionally high insulation value making the enclosures energy efficient and helping to reduce carbon footprint whilst meeting all the security requirements.

## FEATURES

- SR2 SR3 AND SR4
- FLEXIBILITY IN SIZE
- MULTIPLE LOCKING OPTIONS
- SECURE VENTILATION OPTIONS
- VISION PANEL OPTIONS
- GENERATOR FLAP OPTIONS
- VARIOUS EXTERNAL FINISHES AVAILABLE
- NICEIC ELECTRICAL INSTALLATION
- INTRUDER AND FIRE ALARMS

We are not limited to set sizes and design to suit individual requirements. The internal finish is fully lined which enables wall mounting of customers equipment, just advise us of the weight.



Hercules SAF SR3 & SR4  
Doors and Modular Enclosures  
Approved to LPS 1175: Issue 7  
Security Ratings 2, 3 and 4  
Cert. No. 953A/B/C/D/E/F/G/H

For full listings please refer to  
[www.redbooklive.com](http://www.redbooklive.com)





- Doors are pre mounted in a robust steel frame
- Multiple lock choices available
- Heavy duty Stainless Steel handles as standard
- Available in any colour from BS 5252 or RAL
- Hold open door stays available



PRODUCT	Maximum Structural Opening	Minimum Structural Door Opening	Maximum Clear Door Opening	Minimum Clear Door Opening
Hercules SAF Single Doorset	2.90m high x 1.50m wide	0.60m high x 0.48m wide	2.80m high x 1.30m wide	0.70m high x 0.33m wide
Hercules SAF Double Doorset	2.90m high x 2.85m wide	0.60m high x 0.7m wide	2.80m high x 2.45m wide	0.70m high x 0.55m wide

Titan GRP Door range is awaiting certification please contact Morgan Marine for further door size information



# SECURITY DOORS



The Hercules SAF Steel Doorset Range is tested and certified to LPS 1175 issue 7 and offers Security Ratings SR2, SR3 and SR4. They are available as single or double sets and can be either single skin or insulated offering a double skin construction. Fire ratings of up to 4 hours are available.

Hercules Doors can be fitted into Steel and GRP enclosures, Brick Built Buildings and Portal Steel Constructions.

Multiple lock options are available, from Single Point to Multipoint, Push Pad Escape and Pad-lockable, including the revolutionary Pad lockable with internal override meaning no risk to personnel being locked into a building.



The Titan GRP Doorset Range has been successfully tested to LPS 1175 issue 7 to SR2 and SR3 and is currently going through the certification process with BRE. Once certified Titan Doors will be available with Single Point and Multipoint locks, including push pad escape.



## FEATURES

- SR2, SR3 AND SR4
- INSULATED AND NON INSULATED
- AVAILABLE WITH LOUVRES
- VIEWING WINDOWS TO SR4
- FIRE RATINGS
- HINGED TRANSOM TO SR3
- DOUBLE PANIC BARS
- ACCESS CONTROL
- EURO, OVAL AND RIM CYLINDER
- PUSH PAD ESCAPE



Hercules SAF SR3 & SR4  
Doors and Modular Enclosures  
Approved to LPS 1175: Issue 7  
Security Ratings 2, 3 and 4  
Cert. No. 953A/B/C/D/E/F/G/H

For full listings please refer to  
[www.redbooklive.com](http://www.redbooklive.com)



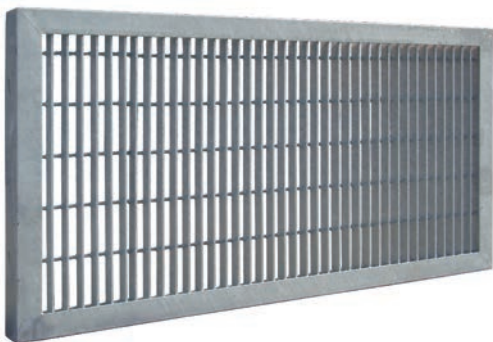
# BARSETS

## FEATURES

- INDIVIDUAL AND MODULAR BARSETS (SR2, SR3 AND SR4)
- INTERNAL FACE FIXED REVEAL MOUNTED
- MODULAR INTERNAL AND MODULAR REVEAL
- MINIMUM OPENING 0.325m<sup>2</sup> TO MAXIMUM OPENING 6m<sup>2</sup>

The Centaur range of Barsets is tested to LPS 1175 issue 7 and certified to SR2, 3 and 4.

Barsets can be both individual or modular in design and come with the option of being reveal fixed or face fixed, the standard finish is galvanized, painted finish is available if required.



Unrated barsets are also available as shown above



Centaur SR2 SR3 & SR4  
Individual and Modular Barsets  
Approved to LPS 1175: 7  
Security Ratings 2, 3 and 4  
Cert. No. 953G Issue 1

For full listings please refer to  
[www.redbooklive.com](http://www.redbooklive.com)



# CAGES

## FEATURES

- MINIMUM SIZE 0.5m x 0.5m x 0.6m HIGH
- MAXIMUM 40m x 20m x 5m HIGH
- PADLOCKABLE DOOR ACCESS
- CAGES CAN PROTECT EQUIPMENT INSIDE A LARGER BUILDING OR BE EXTERNALLY INSTALLED

The Centaur range of Cages is tested to LPS 1175 issue 7 and certified to SR2, 3 and 4.

The centaur cage is a modular design incorporating 4 sides and roof with single or double doorsets.



Centaur SR2 SR3 & SR4  
Individual and Modular Barsets  
Approved to LPS 1175: 7  
Security Ratings 2, 3 and 4  
Cert. No. 953G Issue 1

For full listings please refer to  
[www.redbooklive.com](http://www.redbooklive.com)



# VENTILATION

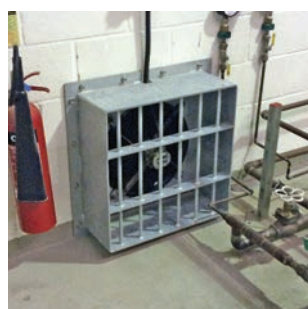


## FEATURES

- LOUVRES UP TO 1200mm<sup>2</sup> CAN BE COMBINED TO AN UNLIMITED WIDTH (SR2, SR3 AND SR4)
- VENTILATION / CABLE COWLS UP TO 1100mm<sup>2</sup> (SR2, SR3 AND SR4) \*UK Patent Application No. 1409987.3



# ADDITIONAL FEATURES



- ROOF ACCESS HATCHES UP TO 1500mm<sup>2</sup>\*  
\*Awaiting certification

- REMOVABLE ROOFS (SR2, SR3 AND SR4)

- GENERATOR ACCESS FLAP (SR2, SR3 AND SR4) \*UK Patent Application No. 1504964.6

- FILL POINT DOORS (SR2, SR3 AND SR4)

- VISION PANELS (SR2, SR3 AND SR4)

- NICEIC ELECTRICAL INSTALLATIONS

- AIR CONDITIONING AND HVAC SYSTEMS

- FIRE / INTRUDER ALARMS

- APERTURE / FAN PROTECTION



Morgan Titan  
Approved to LPS 1175: Issue 7  
Security Rating 2, 3 and 4  
Cert. No. 1051a/03



Hercules SAF SR3 & SR4  
Doors and Modular Enclosures  
Approved to LPS 1175: Issue 7  
Security Ratings 2, 3 and 4  
Cert. No. 953A/B/C/D/E/F/G/H

For full listings please refer to [www.redbooklive.com](http://www.redbooklive.com)



# SITE INSTALLATION



Morgan Marine operates permanent experienced installation teams for on site assembly, bolt downs and electrical installations.

All site crews are fully trained and accredited with the latest qualifications to suit all industries.

Site crews can install worldwide.

- RISK ASSESSMENT/METHOD STATEMENTS PROVIDED
- HIAB AND CRANE OFFLOAD
- SITE AND CRANE SURVEYS
- ROUTE SURVEYS AND ESCORTS
- TRAFFIC MANAGEMENT AND ROAD CLOSURES

### LPCB Inspection Service

Morgan Marine offers an inspection service to ensure products certified under LPS 1175 continue to meet the required Security Rating. Over time we are aware modifications are made by others which are not necessarily in line with the standard. We can offer site specific inspections, annual and five yearly to suit our clients requirements.

All site crews are fully trained in:

- CSCS
- CCNSG SAFETY PASSPORT
- CPCS/AP/BANKSMAN
- WATER HYGIENE CARD
- MOBILE/ELEVATED PLATFORMS
- GAS NETWORK SAFETY PASSPORT
- PASMA
- EUSR
- BESC
- FIRST AID





Morgan Marine supply enclosures to the following:



Water



Gas



Power



Telecommunications



Rail



Petro Chemical



**Morgan Marine Ltd** Llandybie, Ammanford, Carmarthenshire UK SA18 3GY

Tel: (+44) 01269 850437

Fax: (+44) 01269 850656

[www.morgan-marine.com](http://www.morgan-marine.com)

For full listings please refer to [www.redbooklive.com](http://www.redbooklive.com)



Morgan Titan  
Approved to LPS 1175: Issue 7  
Security Rating 2, 3 and 4  
Cert. No. 1051a/03



Hercules SAF SR3 & SR4  
Doors and Modular Enclosures  
Approved to LPS 1175: Issue 7  
Security Ratings 2, 3 and 4  
Cert. No. 953A/B/C/D/E/F/G/H



Centaur SR2 SR3 & SR4  
Individual and Modular Barsets  
Approved to LPS 1175: 7  
Security Ratings 2, 3 and 4  
Cert. No. 953G Issue 1